



**CORNWALL
COUNCIL**
one and all · ohen hag oll

Together 
for Families

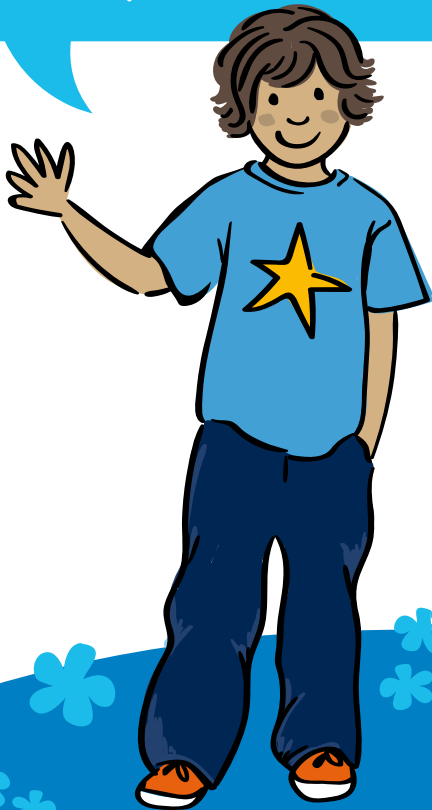
Adoption

A child's guide



www.cornwall.gov.uk

Hi, I'm Charlie. I'm going to tell you about being adopted.



Adoption means becoming part of a new family forever.



Being adopted is when you can't live with your birth parents and you need to live in a new family.



Lots of children are adopted. Some are adopted as babies and some when they are older.



Sometimes brothers and sisters are adopted together. Sometimes they need different families.



Your adoption journey

You're being
looked after
by your foster
carer.

Your review
meetings look
at who you
should live
with.

If you can't
return to your birth
family, your social
worker will talk with
you about finding a
new family.



A group of people including your social worker will make sure that adoption is right for you.


A Court also has to decide if adoption is right for you.

If it is, your social worker looks for the right family for you.





When your social worker thinks they have found a family, the Adoption Panel makes sure it is the right one for you.



You and your new family will spend time getting to know each other before you go to live with them.



Before you meet your new family, your social worker and foster carer will show you photographs and tell you all about them.



Your social worker will visit you and your new family for a while.

When you and your family are ready you will all be invited to Court for your adoption.

Adoption Order

Your adoption journey

Did you know?



Your **new parents** will make big decisions about you, such as which school you go to, and small decisions, such as when you need a bath.

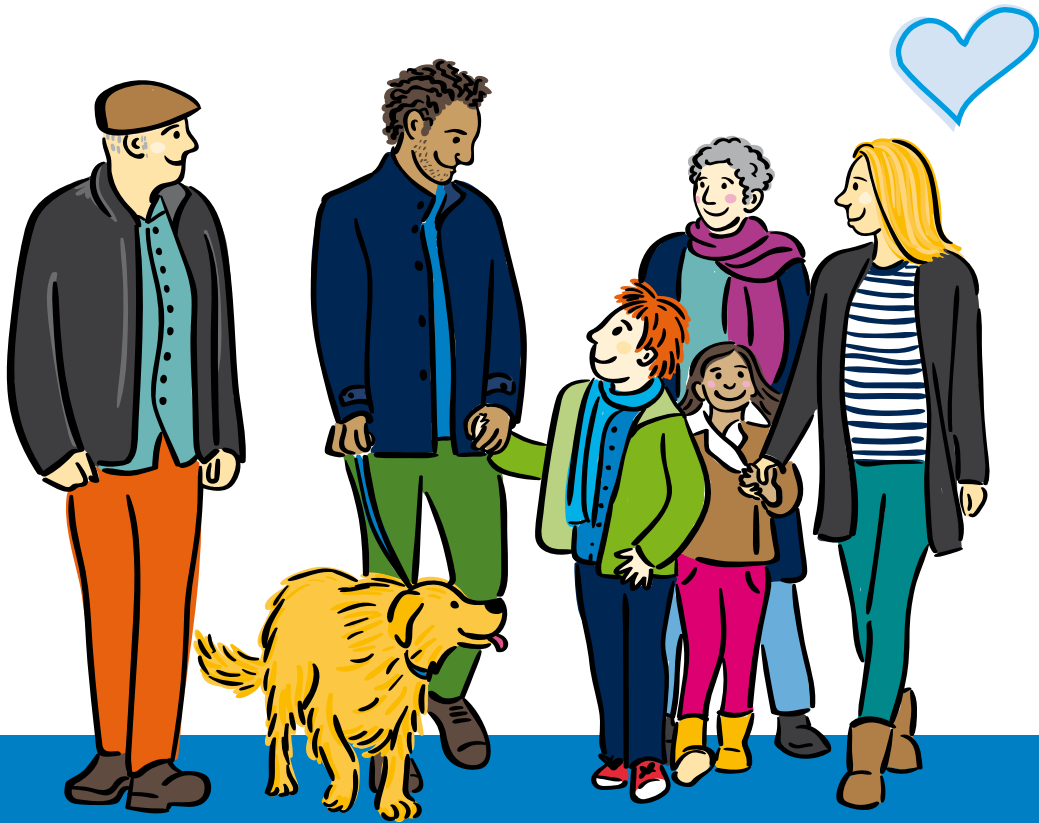


After you've been adopted you get to have a **new surname**. This will be your new family's name. Living in a new family takes practice.



Moving to live with your **new family** will probably mean moving to a new area and a new school.





If there are any other children in your new family, they become your brothers and sisters. You could have new aunts, uncles and grandparents too!

And also...

- Your social worker will give you a book with photos about your special story.
- It is important you tell your social worker how you are feeling.
- People who will know you are adopted are social workers, the Children's Guardian, your birth family, the friends and relatives of your new family and your new teacher.
- Social workers are sure that adoptive families can look after you properly.
- You need to tell your social worker who you want to keep in touch with.



Your social worker and foster carer can tell you more.

Your family

Everyone's family is different.
Your family could be two
daddies, two mummies, a mum,
a dad, or a mum and dad.



We promise to...



help you understand about adoption.



listen to what you tell us about what you want and how you feel.



do our best to make sure you do not wait too long for a new family.



do our best to help if it is decided that it would be good for you to have contact with your birth family. This might mean helping with visits or it might mean passing on letters.





try hard to make sure you can live with your brothers and sisters if that is best for you.



remember that your family background and religion are important.



help you settle into your new family.



offer help and support to your birth family.



Who can help you?

Your social worker and foster carer will be working together to help you.

Your social worker is called:

Telephone:

Address:

Your foster carer is called:

Telephone:

Address:

Other people who will listen to you are...



How to get in touch:

You can call the Cornwall and Isles of Scilly Adoption Team for general enquires and advice on **01872 322200**

You can also write to us at:

Cornwall Council and The Council
of the Isles of Scilly Adoption Agency
Old County Hall
Truro TR1 3AY

If you would like this information in another format or language please contact:

Cornwall Council, County Hall
Treyew Road, Truro TR1 3AY

Telephone: 0300 1234 100

Email: enquiries@cornwall.gov.uk

www.cornwall.gov.uk

